

# GLACIER D120

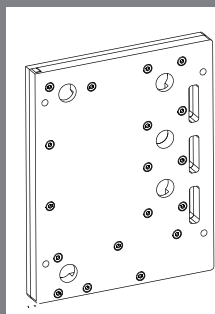
# DISTRIBUTION PLATE

PH-D120\_01

INSTALLATION GUIDE V1.0

## PACKAGE CONTENTS

For latest version check [www.Phanteks.com](http://www.Phanteks.com)



GLACIER D120  
QTY: 1



Glacier Stop Fitting  
QTY: 1



M4x8 Screws  
QTY: 4



3mm Allen Key  
QTY: 1



Phanteks D-RGB Cable  
QTY: 1



D-RGB MB Adapter  
QTY: 1

**WARNING** – This product is intended for advanced users. Improper installation may result in damage to your equipment. While all efforts have been made to provide the most comprehensive information possible, Phanteks assumes no liability expressed or implied for any damage(s) occurring to your components as a result of using Phanteks cooling products, either due to mistake or omission on our part in the below instructions, or due to failure or defect in the Phanteks cooling products. Do not disassemble the water block. Warranty will be voided.

Turn off the power to your system and discharge your body's static electric charge before proceeding with the installation procedure. If you do not feel comfortable with performing the installation procedure, consult a qualified computer technician.

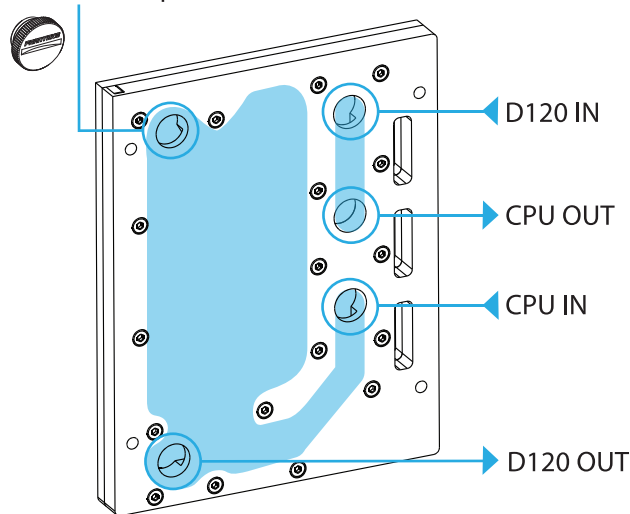
## STEP 1. WATER LOOP PLANNING

Take a look at the port overview and plan your water loop accordingly.

**!** Make sure to use the correct in and out ports for the CPU.

**PRO TIP** The D120 IN and OUT ports can also be reversed if necessary.

Fill/Air bleed port



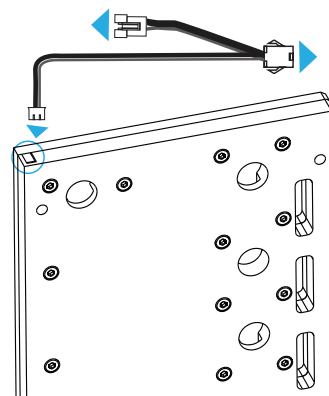
## STEP 2. CONNECT THE D-RGB CABLE

Connect the Phanteks D-RGB Cable to the LED strip at the top.

**PRO TIP** All Phanteks D-RGB products can be daisy-chained together.

**PRO TIP** You can connect the D-RGB cable to a compatible motherboard with the included D-RGB MB adapter.


Connect to Phanteks Case / Motherboard Cable

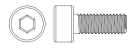


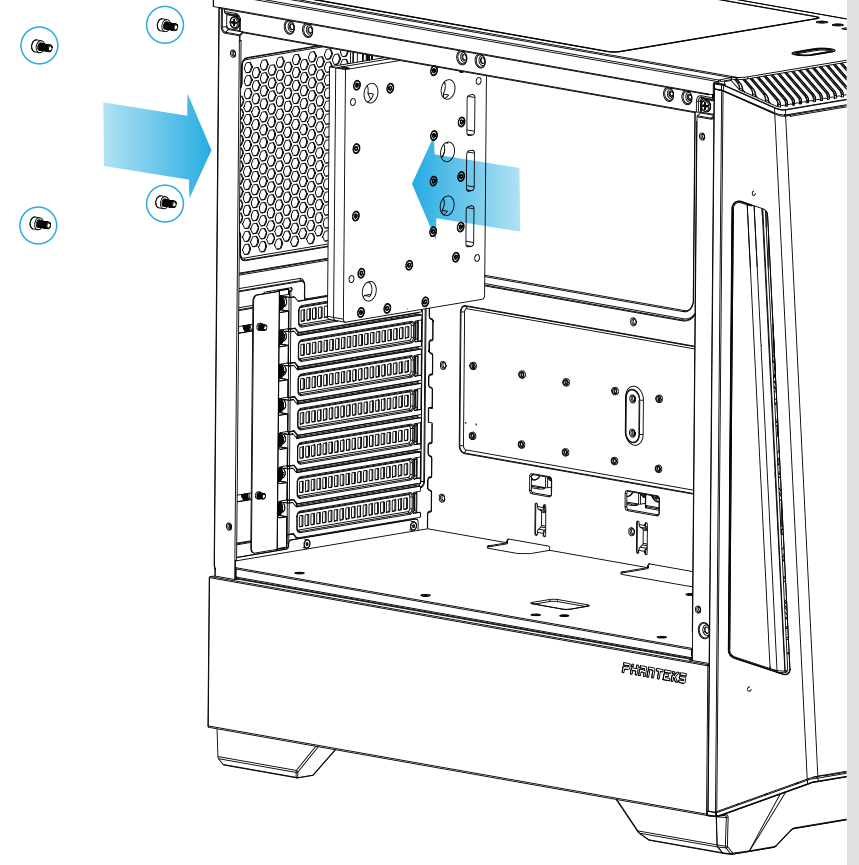
**PHANTEKS**

### STEP 3. INSTALL THE DISTRIBUTION PLATE

Install the Distribution Plate on the rear panel of the chassis. Use the 4 included M4 screws.


 *Do not overtighten the M4 screws.  
(Max 1.5N/m)*

 4x



### STEP 4. INSTALLING FITTINGS

Install G1/4 threaded male fittings and close the remaining port with the included Stop Fitting.

 *Always perform a leak test before  
providing power to any system  
components.*



*Carefully loosen the fill port stop fitting  
to let trapped air bleed out.*

